



GAT MONTHLY MEMBERSHIP PROGRESS REPORT

Results as of: 5/31/2023

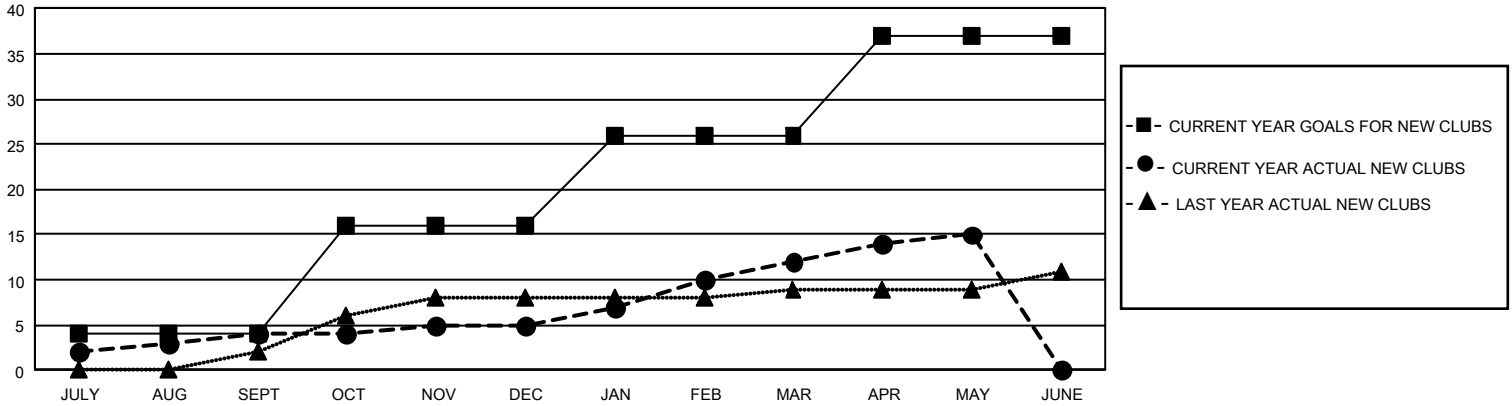
GAT Constitutional Area 2

REPORT DOES NOT INCLUDE CLUBS IN UNDISTRICTED AREAS.

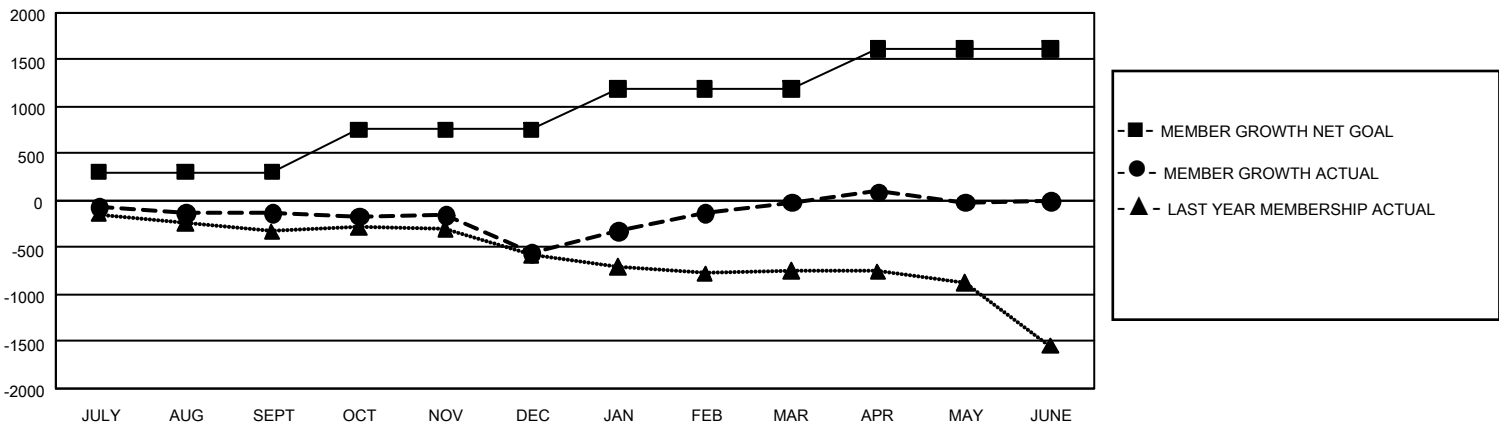
Clubs			
RESULTS FOR 2022-2023			
QUARTER	NEW CLUB GOAL	NEW CLUBS	DROPPED CLUBS
JULY/AUG/SEPT	12	4	5
OCT/NOV/DEC	36	1	11
JAN/FEB/MAR	30	7	5
APR/MAY/JUNE	33	3	3

Members			
RESULTS FOR 2022-2023			
QUARTER	MEMBER GROWTH NET GOAL	MEMBER GROWTH ACTUAL	DROPPED MEMBERS ACTUAL (including transfers)
JULY/AUG/SEPT	306	618	652
OCT/NOV/DEC	450	935	1,254
JAN/FEB/MAR	438	1,253	632
APR/MAY/JUNE	426	752	666

GOALS AND ACTUAL NEW CLUBS CUMULATIVE



GOALS AND ACTUAL MEMBERS CUMULATIVE



DROPPED CLUBS: 24	
DROPPED MEMBERS	
DECEASED	418
CLUB CANCELLED	101
OTHER	2,686
TOTAL	3,205

752 CLUBS OF 1,264 ADDED 1 OR MORE NEW MEMBERS

[CLICK HERE FOR CUMULATIVE MEMBERSHIP DATA](#)

GENDER DISTRIBUTION	
MALE	17,429 (64.31%)
FEMALE	9,670 (35.68%)
NON BINARY	0 (0.00%)
PREFER NOT TO ANSWER	2 (0.01%)
TOTAL FAMILY UNIT MEMBERS	4,878
FAMILY MEMBERS PAYING HALF DUES	2,506